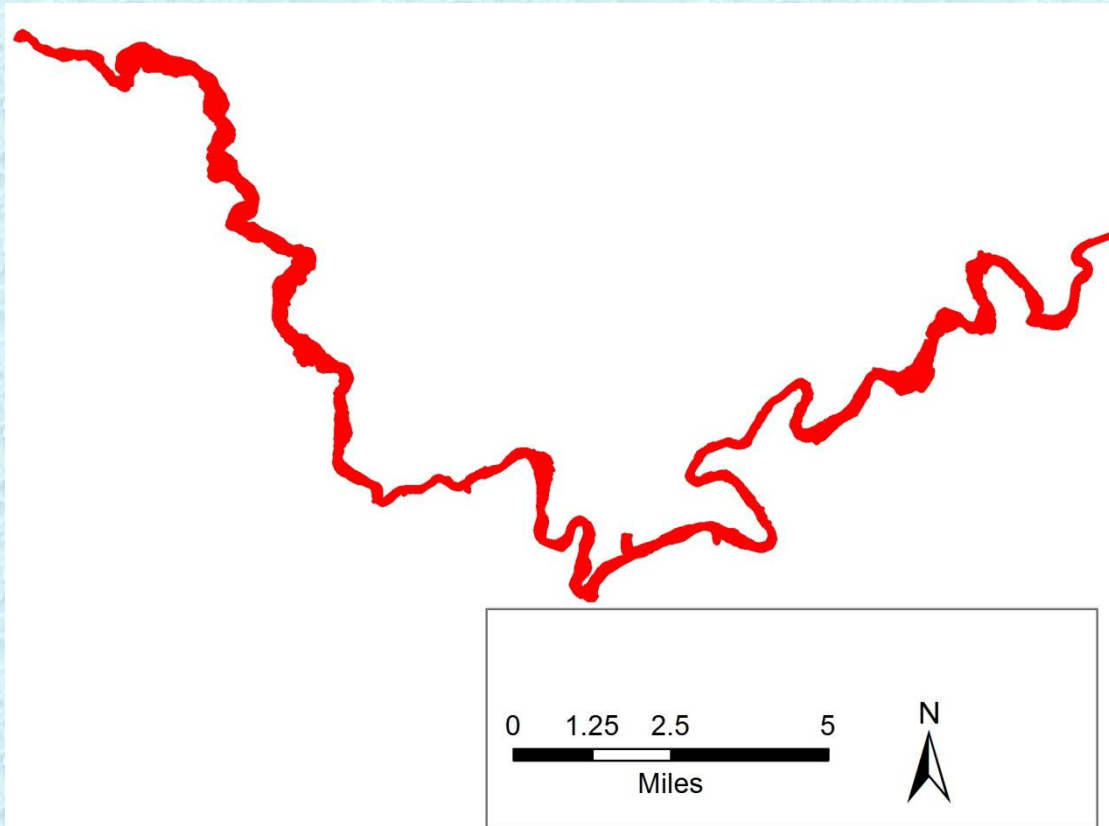


# Delineating the River Corridor and Recognizing Geomorphic Process

Presentation to IDT-October 2015

# Delineation of River Corridor

- The river corridor was defined to be the extend of the 100 year flow event including areas constraining that extent.



# Diversity of the River Corridor

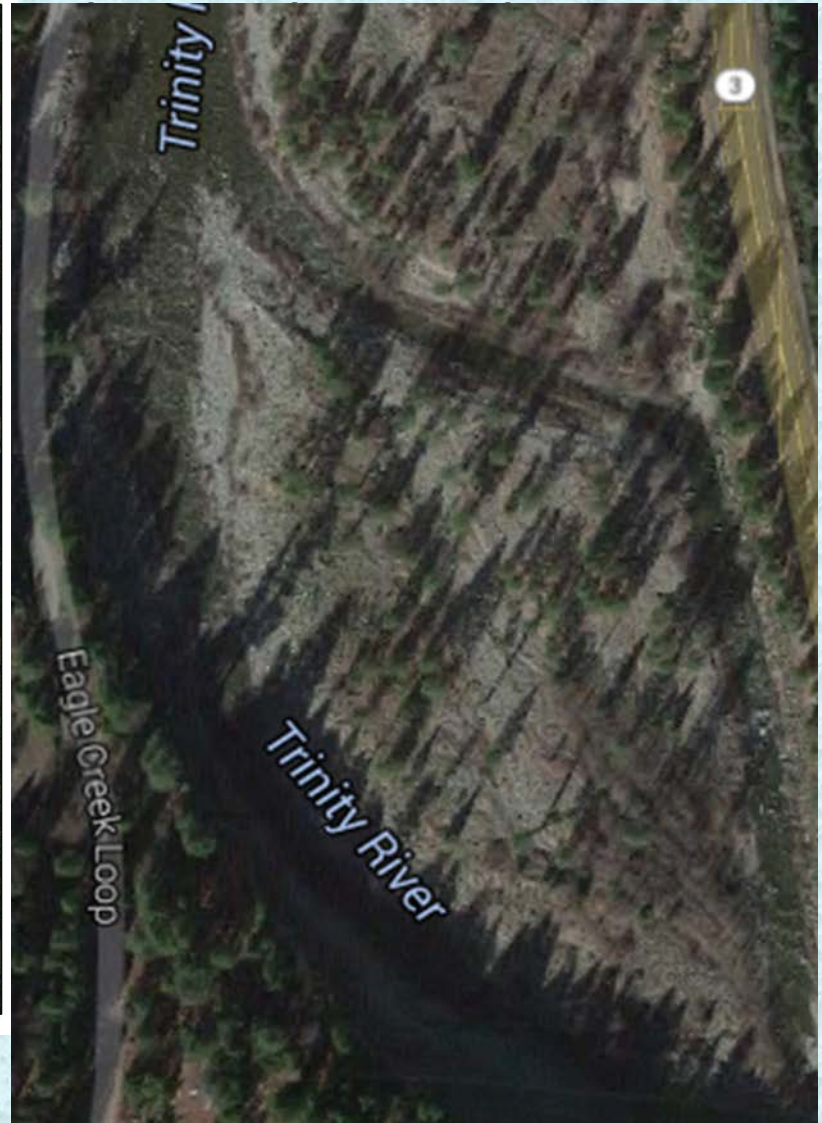
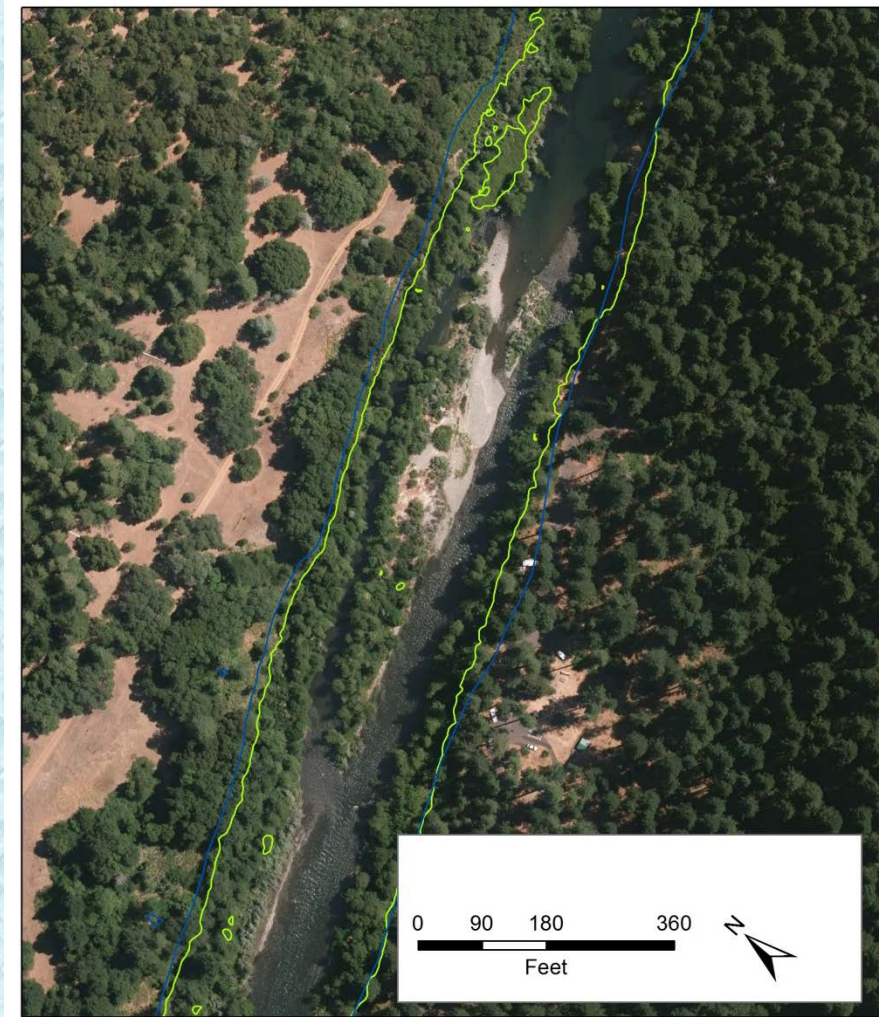
- Immediately apparent about the River Corridor
  1. River corridor consists of lateral contractions and expansions
  2. The presents of bed rock is highly variable
  3. Land use/history is variable
  4. Variable slope

# Recognizing what These differences mean

- Geomorphic processes through reaches are expected to vary.
- Channel morphology is expected to vary
- The extent of functioning flood plain is highly variable



# Recognizing what These differences mean

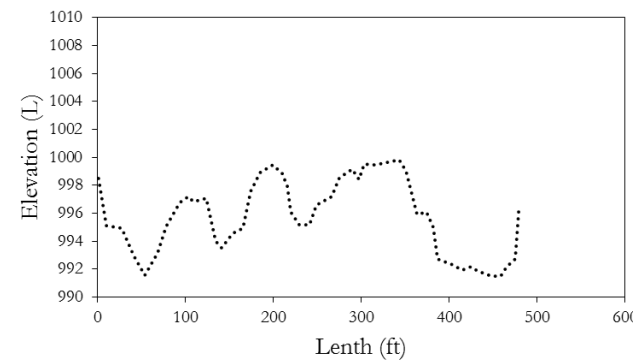
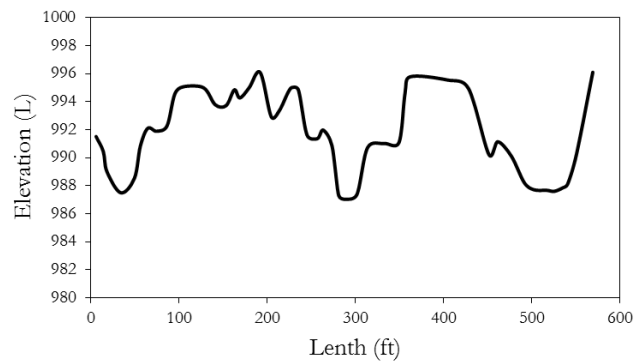
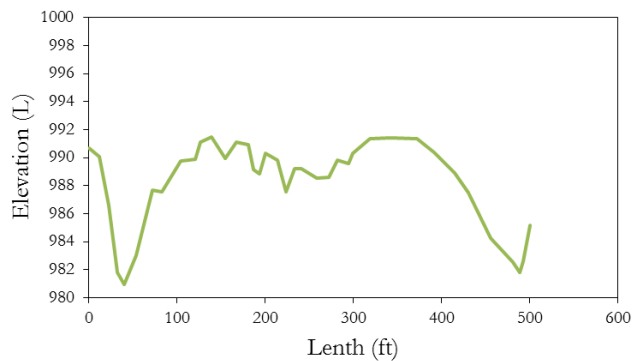




# Recognizing what These differences mean

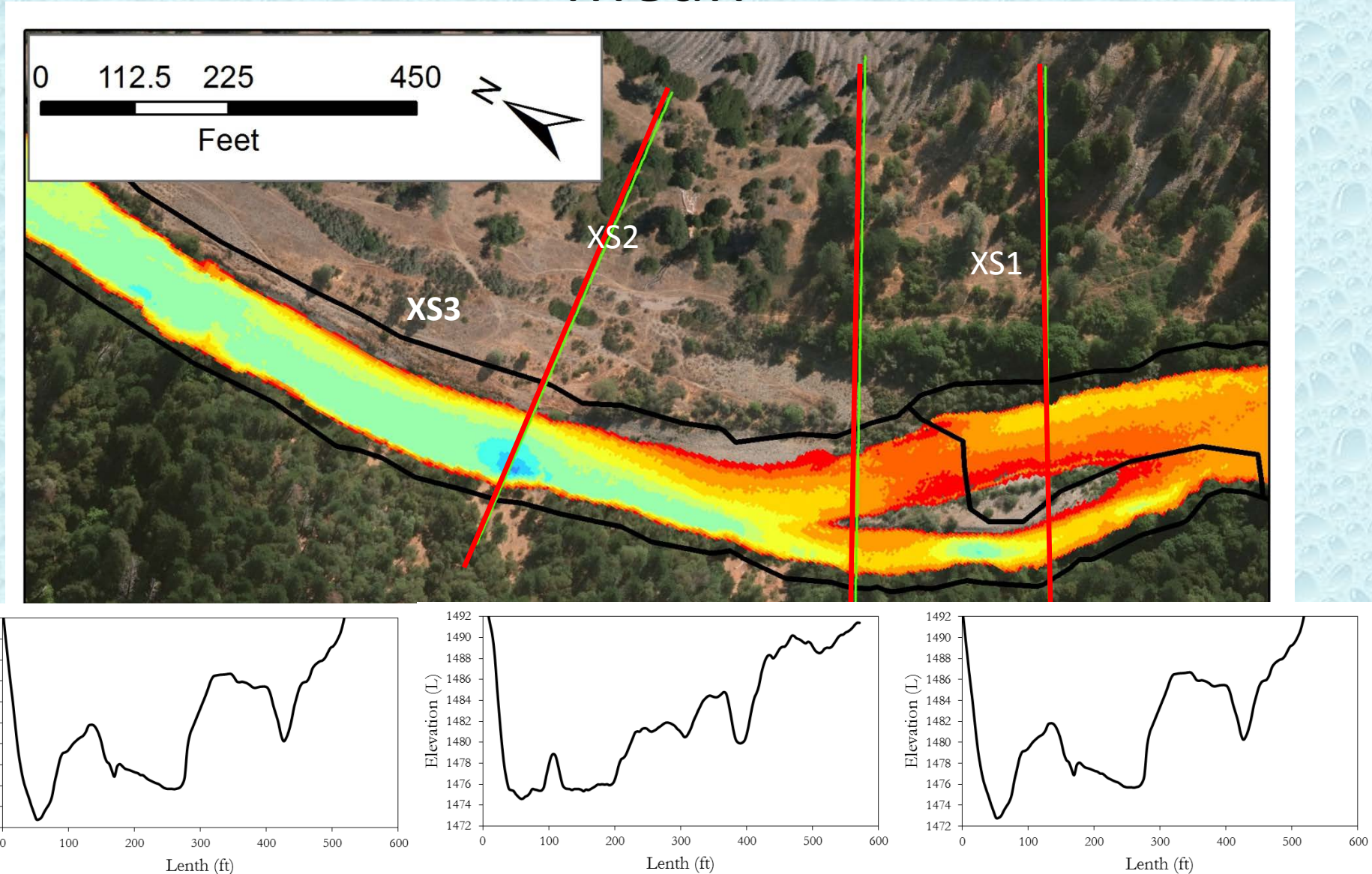


# Recognizing what These differences mean



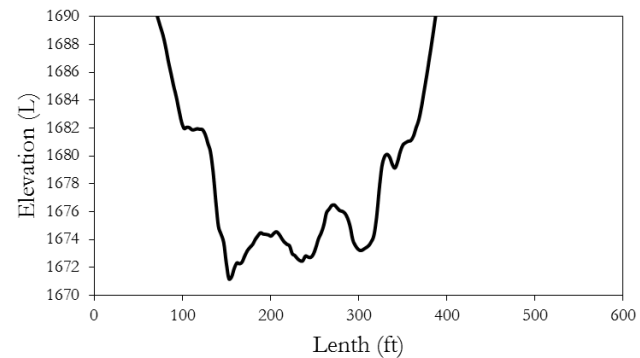
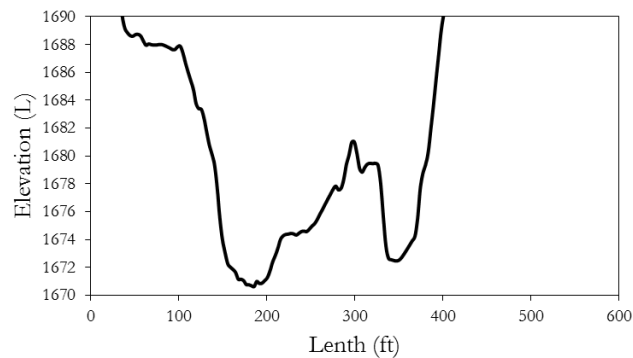
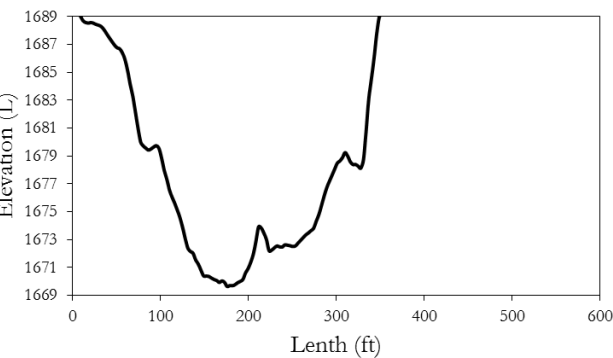
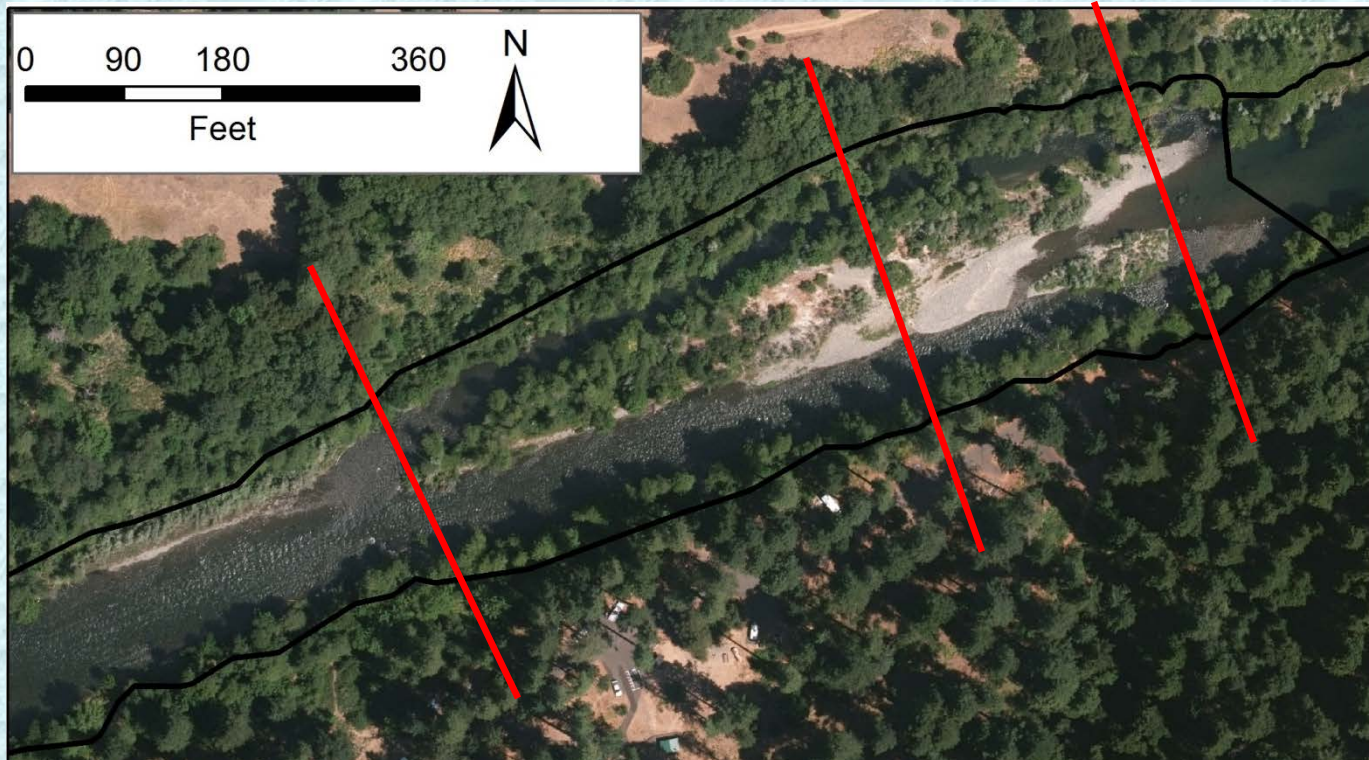


# Recognizing what These differences mean





# Recognizing what These differences mean





# Recognizing what These differences mean

